

ManPak

ULTRA-PORTABLE DATA TERMINAL

Our new market-changing VSAT terminal weighs less than 12kgs and fits neatly into a backpack for easy transportation. Fully integrated with no removable parts ManPak is operational in three minutes.



uPak®60

COMPACT, ONE BUTTON SYSTEM

This fully automated VSAT terminal features a 60cm parabolic antenna, capable of high speed data and HD SNG transmissions. uPak®60 can be carried as checked airline baggage and operated with little or no training.



Tr-uPod®

MULTI-BAND UPLINK TRIPOD

This multi-band tripod antenna features tool-less assembly and can be flown in two bags. Available fully automated or with simple manual operation Tr-uPod® can be used by almost anyone regardless of technical expertise.



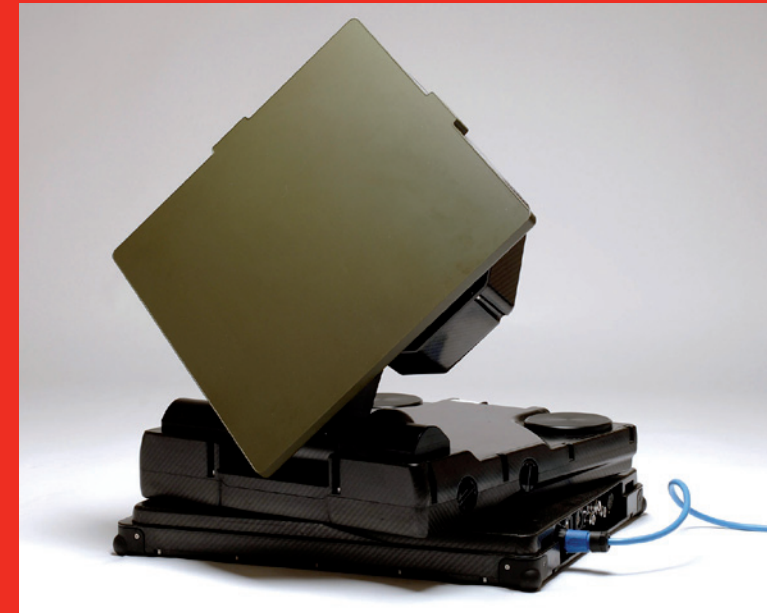
SIS LIVE Links
2 Whitehall Avenue, Kingston, Milton Keynes, MK10 0AX, UK
tel: +44 (0)1908 865656

SIS LIVE OBs
Station Road, Langley, SL3 6DB, UK
tel: +44 (0)1753 588088

SIS LIVE Europe
62 Boulevard Garibaldi, 75015 Paris, France
tel: +33 960 123 356

SIS LIVE US
3312 Shorecrest Drive, Dallas, Texas 75235, USA
tel: +1 214 350 1309

sales@sislive.tv
www.sislive.tv

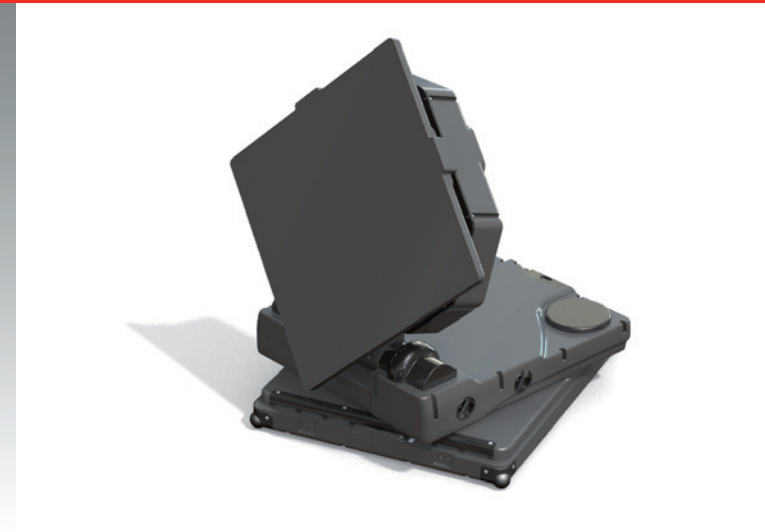


uPak® INTEGRATED AND COMPACT VSAT TERMINAL

uPak® is an integrated and compact, fully automated VSAT terminal that provides high-speed data communications for internet connectivity, video transmission and VPN connectivity.

With single button operation the unit can be used by anyone with little or no training. uPak is lightweight and extremely portable, designed to be transported as checked baggage on an airline or in a rucksack for remote field operations.

The system offers a high gain, for more throughput and enables uPak to transmit in less than optimal conditions.



FEATURES

- High performance flat panel antenna
- Fully automated acquisition
- One button operation
- Integral iDirect modem
- Rucksack or rugged carry case
- 24 VDC with MIL batteries or AC power
- Weatherproof to IP65
- MIL STD 810F compliant
- Ka, Ku and X bands available

TECHNICAL SPECIFICATION

Ka Band

Operating band: Tx 29.5GHz to 31GHz
Rx 18.7GHz to 21.2GHz
Transmit Gain: 38.5dBi
EIRP @ 30.5GHz: 50.5dBW
G/T @ 20.7GHz: 13dBk
Polarisation: Linear (H/V), Circular (Option)

Ku Band

Operating band: Tx 13.75GHz to 14.5GHz
Rx 10.95GHz to 12.75GHz
Transmit Gain: 31.5dBi
EIRP @ 14.15GHz: 44.5dBW
G/T @ 11.7GHz: 9dBk
Polarisation: Linear (H/V), Rx orthogonal to Tx

X Band

Operating band: Tx 7.9GHz to 8.4GHz
Rx 7.25GHz to 7.75GHz
Transmit Gain: 30dBi
EIRP @ 8.15GHz: 42dBW
G/T (min): 8.4dBk
Polarisation: RHCP switchable to LHCP (Rx orthogonal to Tx)

Modem: Internal iDirect iConnex i300 with External L-Band interface for other modems

MOTORISED CONTROL

Operating range: El: 0 to +90°, Az: ± 200°, Pol: ± 95°
Terminal user interface: Simple to operate PC based GUI system running on external PC device
Satellite Acquisition: Automatic via modem lock and/or beacon receiver with manual override
Remote interface: Laptop PC, connected with wired Ethernet

POWER

Input voltage range: 90 to 260VAC (50/60Hz) or 10 to 30VDC

ENVIRONMENTAL

Temperature range: Operational: -20 to +55°C
Wind Loading: Operational: 45km/hr, Survival: 90km/hr
Ingress Protection: IP65
Humidity, shock, vibration: MIL-STD-810F

PHYSICAL

Packaging: IATA compliant