

ManPak

ULTRA-PORTABLE DATA TERMINAL

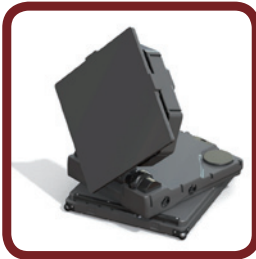
Our new market-changing VSAT terminal weighs less than 12kgs and fits neatly into a backpack or bag for easy transportation. Fully integrated with no removable parts ManPak is operational in three minutes.



uPak®

INTEGRATED AND COMPACT VSAT TERMINAL

Flat plate, one button system featuring SIS LIVE's award-winning differential GPS antenna controller, satellite acquisition software and GUI. IATA compliant.



Tr-uPod®

MULTI-BAND UPLINK TRIPOD

This multi-band tripod antenna features tool-less assembly and can be flown in two bags. Available fully automated or with simple manual operation Tr-uPod® can be used by almost anyone regardless of technical expertise.



SIS LIVE Links
2 Whitehall Avenue, Kingston, Milton Keynes, MK10 0AX, UK
tel: +44 (0)1908 865656

SIS LIVE OBs
Station Road, Langley, SL3 6DB, UK
tel: +44 (0)1753 588088

SIS LIVE Europe
62 Boulevard Garibaldi, 75015 Paris, France
tel: +33 960 123 356

SIS LIVE US
3312 Shorecrest Drive, Dallas, Texas 75235, USA
tel: +1 214 350 1309

sales@sislive.tv
www.sislive.tv



uPak®60 COMPACT ONE BUTTON SYSTEM

uPak®60 is an integrated and compact, fully automated VSAT terminal that provides a high bandwidth connection capable of high speed data and HD SNG transmissions.

With single button operation the unit can be used by anyone with little or no training. uPak60 is lightweight and extremely portable, designed to be transported as checked baggage on an airline or in a rucksack for remote field operations.

The system offers a high gain, for more throughput and enables uPak60 to transmit in less than optimal conditions.



FEATURES

- High performance 60cm parabolic segmented antenna
- Fully automated acquisition
- One button operation
- Integral iDirect modem
- Rucksack or rugged carry case
- 24 VDC with MIL batteries or AC power
- Weatherproof to IP65
- MIL STD 810F compliant
- Ka, Ku and X bands available

TECHNICAL SPECIFICATION

Ka Band

Operating band:	Tx 29.5GHz to 31GHz Rx 18.7GHz to 21.2GHz
Transmit Gain:	43.4dBi
EIRP @ 30.5GHz:	55dBW
G/T @ 20.7GHz:	17.2dBk
Polarisation:	RHCP switchable to LHCP (Rx orthogonal to Tx) Linear (Option)

Ku Band

Operating band:	Tx 13.75GHz to 14.5GHz Rx 10.95GHz to 12.75GHz
Transmit Gain:	37dBi
EIRP @ 14.15GHz:	49.5dBW
G/T @ 11.7GHz:	12.7dBk
Polarisation:	Linear (H/V), Rx orthogonal to Tx

X Band

Operating band:	Tx 7.9GHz to 8.4GHz Rx 7.25GHz to 7.75GHz
Transmit Gain:	31.9dBi
EIRP @ 8.15GHz:	44dBW
G/T @ 7.5GHz:	9.8dBk
Polarisation:	RHCP switchable to LHCP (Rx orthogonal to Tx)

Modem: Internal iDirect iConnex i300 with External L-Band interface for other modems

MOTORISED CONTROL

Operating range:	EI: 0 to +90°, Az: ± 200°, Pol: ± 95°
Terminal user interface:	Simple to operate PC based GUI system running on external PC device
Satellite Acquisition:	Automatic via modem lock and/or beacon receiver with manual override
Remote interface:	Laptop PC, connected with wired Ethernet

POWER

Input voltage range:	90 to 260VAC (50/60Hz) or 10 to 30VDC
-----------------------------	---------------------------------------

ENVIRONMENTAL

Temperature range:	Operational: -20 to +55°C
Wind Loading:	Operational: 45km/hr, Survival: 90km/hr
Ingress Protection:	IP65
Humidity, shock, vibration:	MIL-STD-810F

PHYSICAL

Packaging:	IATA compliant
-------------------	----------------